

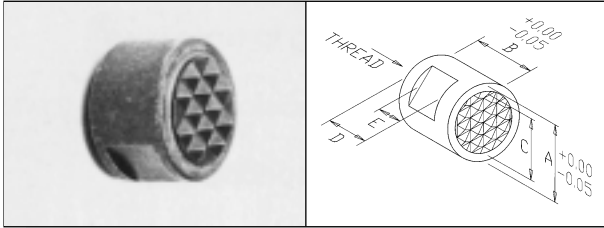


**THAME**  
ENGINEERING

# REPLACEABLE GRIPPER INSERTS

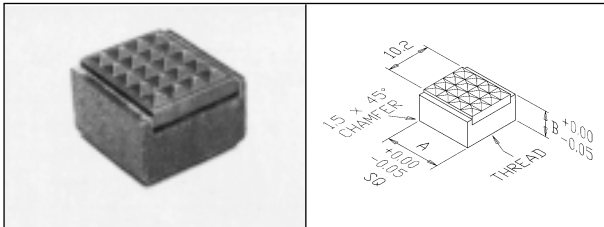
SUITABLE FOR CHUCK JAWS AND FIXTURES

## CARBIDE TIPPED-ROUND DESIGN



THAME PART No.	A	B	C	D	E	TAPPED
EU 2A	12.7	9.5	9.5	6.7	4.7	M6
EU 2B	12.7	12.7	9.5	8.3	4.7	M6
EU 2C	12.7	16.5	9.5	9.9	4.7	M6
EU 5A	15.9	9.5	12.7	6.7	4.7	M6
EU 6A	19.0	9.5	15.9	6.7	4.7	M6

## CARBIDE TIPPED-SQUARE DESIGN

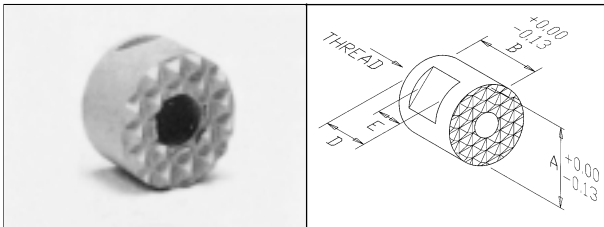


THAME PART No.	A	B	TAPPED
EU 7A	12.7	9.5	M6

- Carbide gripping faces for long life
- Cost effective—just replace insert when worn
- Diamond point gripping serrations for positive grip
- Can be used with special jaws or soft jaws

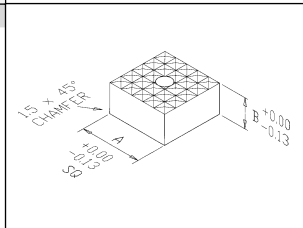
Gripper inserts are retained by either set screw from side to flat on o.d. of gripper or by cap screw from back.

## HARDENED TOOL STEEL-ROUND DESIGN



THAME PART No.	A	B	D	E	TAPPED
EW 10	12	10	6.8	4.7	M5 x 0.8
EW 15	12	12	8.4	4.7	M5 x 0.8
EW 20	16	10	6.8	4.7	M6 x 1.0
EW 25	20	10	6.8	4.7	M6 x 1.0
EW 30	25	10	6.8	4.7	M6 x 1.0

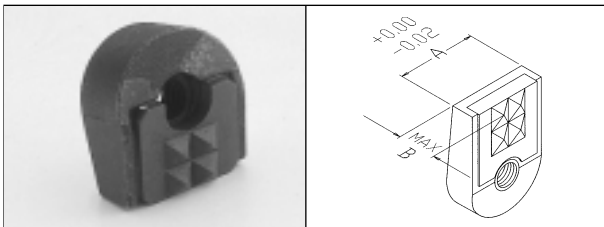
## SQUARE DESIGN



THAME PART No.	A	B	TAPPED
EW 40	12	10	M5 x 0.8

- Hardened tool steel grips for high shock load when loading or unloading.

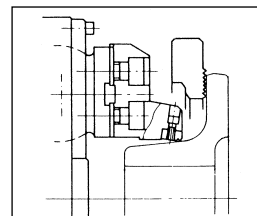
## CARBIDE OR HARDENED TOOL STEEL - ANGLE GRIP DESIGN



THAME PART No.	A	B	TAPPED	MATERIAL
EU 60	14.27	9.5	10-32 UNF	CARBIDE
EW 60	14.27	9.5	10-32 UNF	HARDENED TOOL STEEL

- Ideal for Pull Back Chucks
- Carbide or Hardened Tool Steel

Typical Application Example



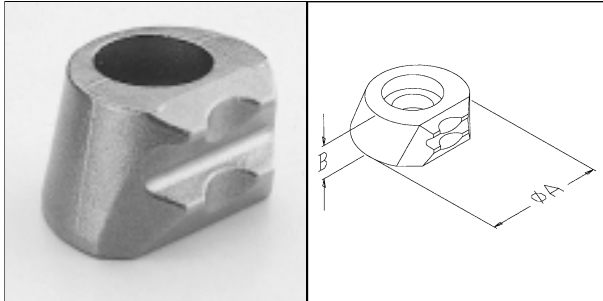


**THAME**  
ENGINEERING

# REPLACEABLE GRIPPER INSERTS

SUITABLE FOR CHUCK JAWS AND FIXTURES

## HARDENED HIGH SPEED STEEL - O.D. GRIP DESIGN



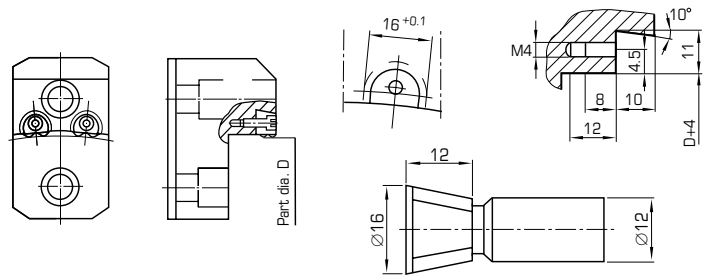
THAME PART No.	A	B
EZ 05	16	10

- Unique shape for OD Gripping.
- Top mounting of bolt.
- Can be used for self-centering or pivoting.
- Inclined cutter easily machines seating pocket.
- Pull down effect by wedge shape design.

Inclusive of socket head screw.

### Mounting instructions:

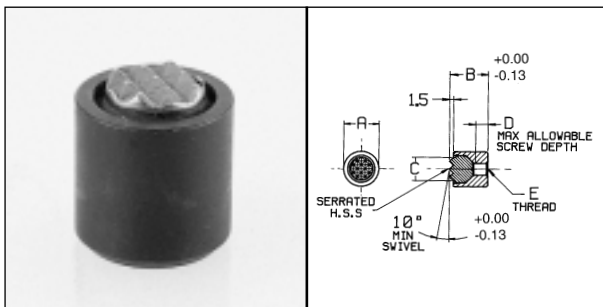
1. Part  $\varnothing +4$  mm (0.16 inch) + seat turning or milling
2. Milling of pocket + drilling and tapping



## PIVOTING GRIPPER BALL UNITS

SUITABLE FOR CHUCK JAWS AND FIXTURES

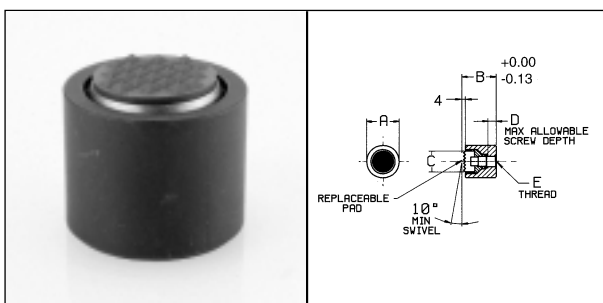
### HARDENED TOOL STEEL BALL TYPES



THAME PART No.	A	B	C	D	TAPPED
EY 05	10	12	6	3.5	M4 x 0.7
EY 10	10	25	6	9.0	M4 x 0.7
EY 15	13	16	8.5	6.5	M5 x 0.8
EY 20	13	25	8.5	9.0	M5 x 0.8

Self aligning grippers that adjust to the workpiece draft angle or irregular surface giving secure workholding.

### HARDENED TOOL STEEL PAD TYPES



THAME PART No.	A	B	C	D	TAPPED
EX 05	19	24	12	8.5	M8 x 1.25
EX 10	24	28	16	9.0	M10 x 1.50
EX 15	30	30	20	8.5	M12 x 1.75
EX 20	36	36	25	12	M12 x 1.75

Carbide or Flat Pad on request.